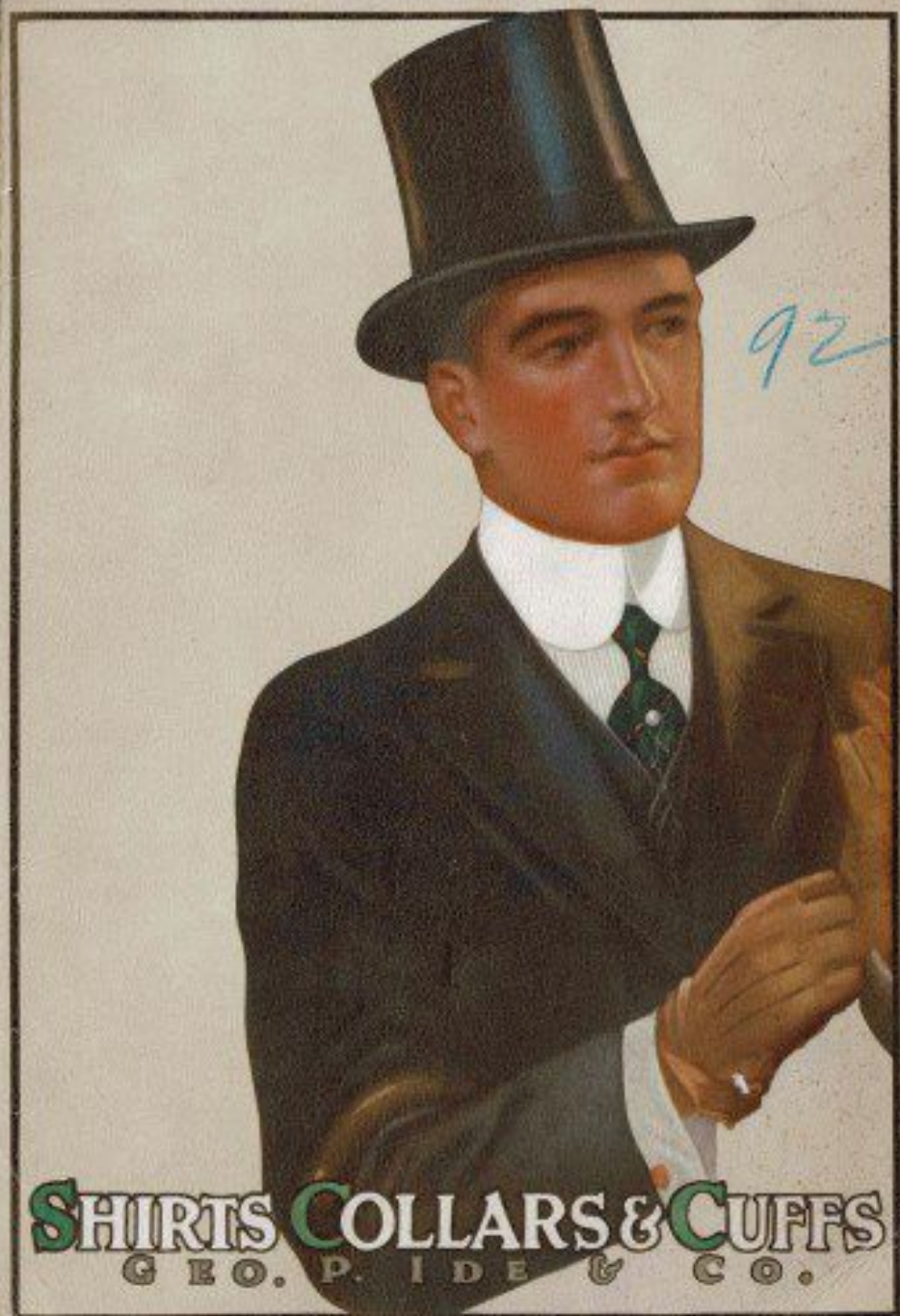
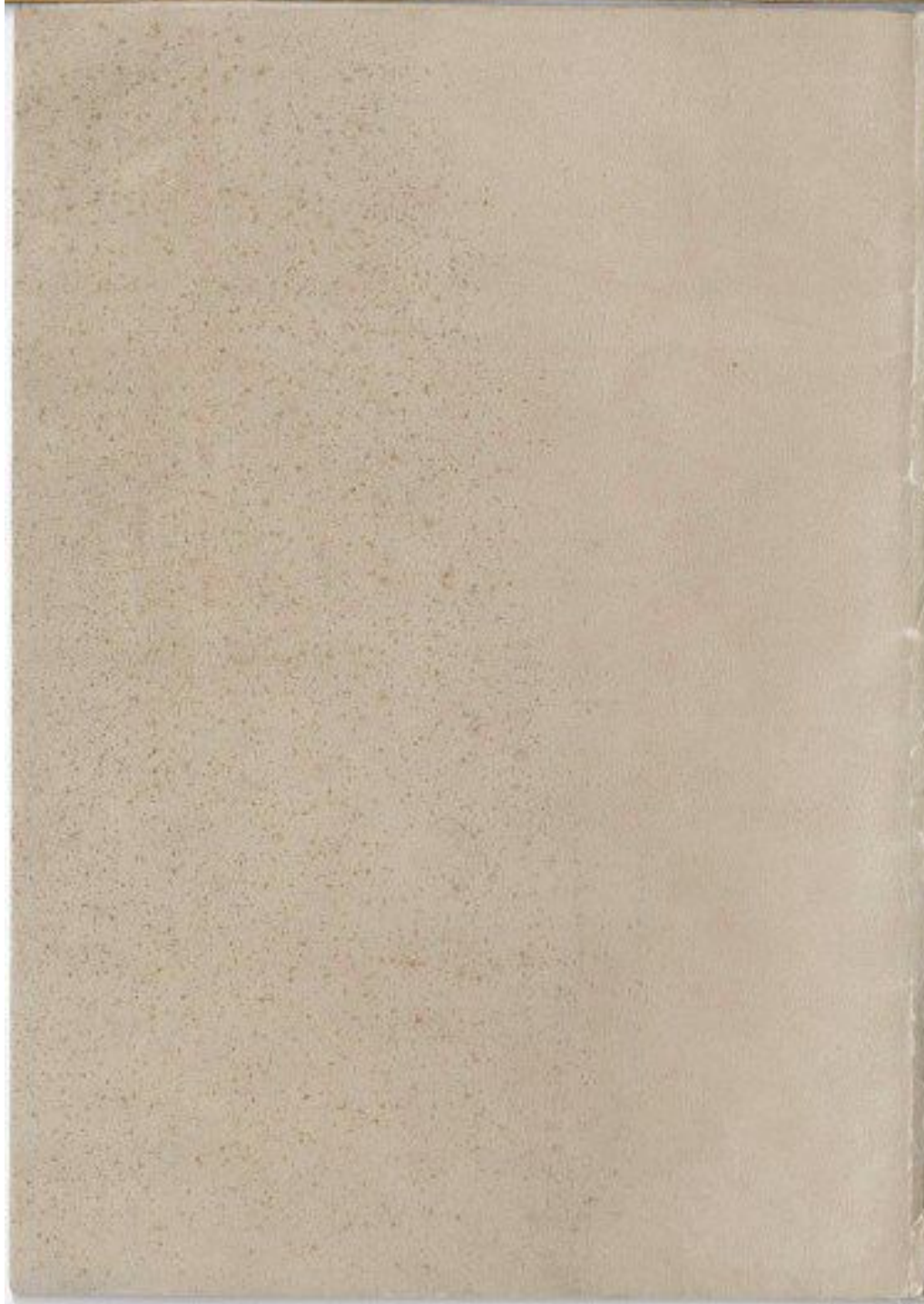




SHIRTS COLLARS & CUFFS
G E O . P . I D E & C O .

14 13 11 10 9 8 7 5 4 3 2 1



92

1 2 3 4 5 7 8 9 10

SHIRTS COLLARS & CUFFS
GEO. P. IDE & CO.



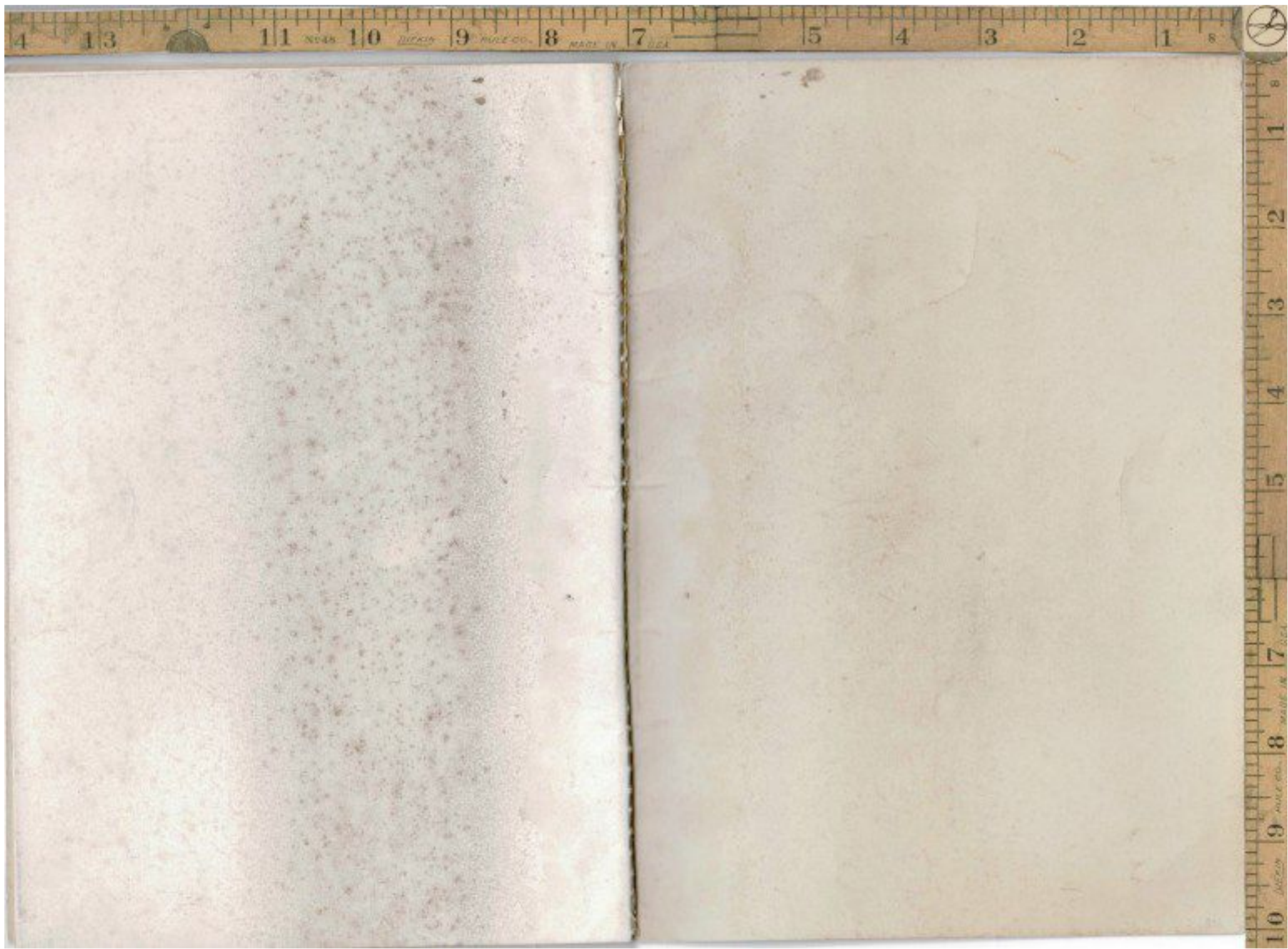
40-
#3200

I D E
SILVER COLLARS
AND CUFFS *and*
I D E & SILVER
BRAND SHIRTS



TRADE MARK
REGISTERED IN
NEW YORK

GEO. P. IDE & CO.
TROY, NEW YORK



14 13 11 10 9 8 7 5 4 3 2 1 8

GEO. P. IDE & CO.

JAMES M. LEE HARRIS L. IDE F. R. THOMAS A. HARRIS, JR. ALLEN M. IDE GEO. P. IDE, JR.

Complete Stocks of
Shirts Collars Cuffs
Carried at our Branch Houses.

NEW YORK

120 FIFTH AVENUE HARRY L. HARRISON, Manager.

CHICAGO

202 WEST JACKSON BOULEVARD, COR. FIFTH AVE. GEO. B. BRADY, Manager.

BOSTON

81-83 KINGSTON STREET FRANK S. KIMBALL, Manager.

SAN FRANCISCO

702-708 MASON STREET ALFRED SCHMIDT, Manager.

DALLAS

110 COMMERCE STREET J. SIM. HUBSON, Manager.

LOS ANGELES

COR. FOURTH AND LOS ANGELES STREETS CHARLES S. DAVISON, Manager.

PORTLAND, ORE.

COR. FOURTH AND ANSELY STREETS JAMES R. BAKER, Manager.

KANSAS CITY, MO.

517-519 BROADWAY D. G. MACKENZIE, Manager.

Full Sample Lines at our Sample Rooms

ST. LOUIS, MO.

S. W. COR. TWELFTH STREET AND WASHINGTON AVE.

BALTIMORE, MD.

202 MERCHANTS & MANUFACTURERS ASSOCIATION BLDG.

DETROIT, MICH.

ROSELAND BLDG., 170 SIBLEY STREET

Factories:

TROY, N. Y.

ALBANY, N. Y.

PORT HENRY, N. Y.

NEWBURGH, N. Y.

MECHANICVILLE, N. Y.

Alphabetical Index

of SILVER COLLARS AND CUFFS

MEN'S COLLARS		MEN'S COLLARS	
	Page		Page
Alect	16	Drayton	17
Almera	10	Durand	15
Amboy	9	Edict	11
Anandale	9	Elsdale	8
Anoka	14	Elverton	10
Arcadian	17	Equator	11
Assembly	16	Export	14
Banquet	16	Exposition	17
Beaumont	16	Fairmont	10
Belcourt	17	Florence	13
Belmont	9	Foenum	13
Berkeley	17	Futurity	15
Berkshire	10	Ganson	9
Bertron	8	Glensdale	17
Berwick	8	Glensora	9
Brandon	16	Golf Club No. 12	18
Brushton	14	Gordon	9
Buckingham	14	Grimsby	13
Buford	16	Halley	12
Cabaret	17	Harmon	11
Canterbury	10	Hudson	12
Capitol	15	Hunter	11
Carlow	13	Kerway	8
Casson	10	Knockabout	18
Caxton	17	Laconia	14
Chatham	12	Lake Shore	8
Claymont	17	Lansdale	8
Clerical Style No. 2	19	Lindale	10
Clerical Style No. 7	19	Malcolm	12
Clerical Style No. 8	19	Malden	10
Colon	15	Manbury	13
Comet	12	Marconi	11
Comfort	13	Mischief	14
Craftsman	9	Moire	17
Cricket	18	Monte Carlo	14
Criterion	8	Motana	15
Defiance	8	Nestor	11
Delmar	12	Needle	13

MEN'S COLLARS

	Page
Otis	11
Outdoor Life No. 1	18
Outdoor Life No. 14	18
Outdoor Life No. 30	18
Outdoor Life No. 31	18
Outpost	10
Paulhan	11
Pembooke	12
Pilgrim	11
Piping Rock	8
Polo	18
Porto Bello	13
Portola	10
Rambler	13
Ramsden	11
Raymore	12
Reliance	9
Republic	15
Resolute	8
Rexton	12
Romanic	14
Rowan	15
Royston	9
Salvo	16
Sanford	9
Sargent	14
Sedgwick	13
Senator	15
Shewin	14
Skyman	12
Starwix	8
Stratton	10
Stroller	13
Suburban	18
Sussex	9
Taconic	9
Talma	14
Tanora	15
Tilton	10
Tophet	12
Torrid	12
Tourist	18
Traveler	18
Triumph	14
Tropic	11
Tuxedo	16
Vanitie	8
Wakopa	16
Waukomis	11
Wexford	13

YOUTHS' COLLARS

	Page
Arden	21
Artful	21
Cadet	21
Chester	20
Equator	20
Eton No. 3	19
Eton No. 4	19
Eton No. 5	19
Frolic	21
Groton	20
Hayward	21
Kemper	20
Kingsley	19
Lashie	20
Manly	20
Milford	21
Mitchell	20
Pastime	20
Perry	20
Repton	20
Rugby	20
St. George	21
Sheldon	20
Todd	19
Torrid	21

MEN'S CUFFS

Albany	22
Algonia	22
Cuba	22
Garland	22
Hickson	22
Morris	21
Odon	22
Ogden	22
St. Regis	22
Shasta	22
Touraine	22
Woolwick	22

NURSES' COLLARS

Clara Barton No. 1	19
Clara Barton No. 2	19

MEN'S SHIRT FRONTS

Style A 110	21
Style A 112	21
Style A 114	21

CONTENTS

	Page
Alphabetical index of Ide Silver Collars and Cuffs.....	44
Assortment of sleeve lengths.....	34
Clerical Collars.....	10
Collar Price List.....	6
Colored Shirts.....	35
Cuffs.....	22
Cuff Price List.....	6
Eton Collars.....	19
Fold Collars.....	8
Foreword.....	5
Ide Biplax Shirts.....	34
Linocord Unbreakable Buttonholes.....	7
List of Branch Houses.....	46
Madras Collars.....	17
Nurses' Collars.....	19
Poke Collars.....	16
Shirt Fronts.....	25
Shirt Front Price List.....	6
Silk Collars.....	18
Soft Collars.....	18
Standing Collars.....	14
Tab Collars.....	14
Title Page.....	5
Turndown Collars.....	8
White Dress Shirts.....	24 & 28
White Mushroom Tuck Shirts.....	25
White Pleated Shirts.....	26 & 29
White Soft Front Shirts.....	30
White Shirt Price List.....	32
Wing Collars.....	14
Youths' Collars.....	19

Foreword

IN presenting this new catalog to the trade, we desire to lay special emphasis on the up-to-date-ness and superior selling qualities of Ide products.

The Ide Silver Collar Line is certainly as comprehensive as anyone could possibly wish for, and includes not only every approved staple shape but a number of very attractive fast selling novelties—trade stimulators.

Ide Silver Collars are authoritative in style and their perfect fitting qualities and durability are proverbial the country over. They are made of material of the utmost staunchness by the most skilled collar craftsmen of the world. They are easy to put on and take off, and have roomy channels which permit the scarf to slip backward and forward with ease. Exclusively—they have Linocord Unbreakable Buttonholes.

All of these points of superiority mean *satisfied customers* for you.

Our exhibition of Ide and Silver Brand White Dress Shirts, Pleated White Negligé, and Colored Shirts is a regular "beauty show." These garments are business bringers if any shirts ever were. The unusualness of the cloths—many of which are specially woven for us—and the many striking patterns attract the most representative trade—the kind you like to see coming into your store.

Geo. P. Ide & Co.

Wholesale Price List

COLLARS, CUFFS and SHIRT FRONTS

	Per Dozen
Men's Collars - - - - -	\$1.10
Youths' Collars - - - - -	.90
Eton Collars 3-4-5 - - - - -	1.10
Kingsley and Todd Collars - - - - -	1.10
Men's Laundered Madras Collars - - - - -	1.10
Clerical Collars - - - - -	1.10
Nurses' Collars - - - - -	1.10
Men's Cuffs - - - - -	2.00

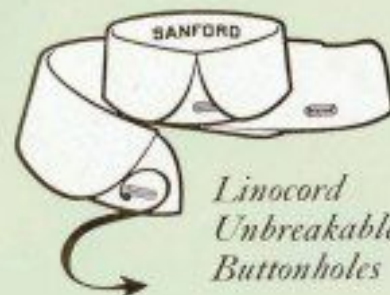
Soft Collars

Golf Club No. 12 and Tourist - - -	\$1.75
Outdoor Life Nos. 1-14-30-31 Polo, Cricket	1.10
Suburban, Traveler, Knockabout - - -	1.10

Shirt Fronts

A110 A112 - - - - -	\$2.25
A114 - - - - -	2.00

TERMS—30 days 5 per cent. or
10 days 6 per cent. discount.



are found only in

**Ide Silver
Collars**

Ordinary collar buttonholes are made with two threads.

All Ide Silver Collars have the well known Linocord Unbreakable Buttonholes, which are made by running, in addition to the two usual threads, a very strong linen cord.

This cord is made especially for the purpose in England. It is grass or naturally bleached, a process which requires from four to six months.

It costs us a good deal more than the ordinary cord produced in this country, but it positively makes the stoutest buttonholes worked into any make of collar.

This exclusive feature gives the utmost strength where other collars are weak. It prevents the buttonhole from stretching, breaking or tearing out, makes the collars easy to button and unbutton and insures permanent style and fit.

The Linocord Unbreakable Buttonhole is a trade winner and a trade holder for you. It enables you to sell service, satisfaction and style as cheaply as your competitor, handling other brands, can sell style alone.

Ide Silver Collars



LAKESHORE
Front 2½ Back 2½
Sizes 13 to 17
Quarter Sizes 13½ to 17½



DEFIANCE
Front 2½ Back 2½
Sizes 13 to 17
Quarter Sizes 13½ to 17½



BERWICK
Front 2½ Back 1½
Sizes 13 to 17½
Quarter Sizes 13½ to 16½



PIPING ROCK
Front 2½ Back 1½
Sizes 13 to 17½
Quarter Sizes 13½ to 17½



KERWAY
Front 2½ Back 1½
Sizes 12½ to 17½
Quarter Sizes 13½ to 17½



HERTRON
Front 2½ Back 2
Sizes 13 to 17½
Quarter Sizes 13½ to 17½



VANTIE
Front 2½ Back 2
Sizes 13 to 17½
Quarter Sizes 13½ to 17½



STANWEX
Front 2½ Back 2½
Sizes 13 to 17
Quarter Sizes 13½ to 16½



ELSDALE
Front 2½ Back 2
Sizes 14 to 17
Quarter Sizes 14½ to 16½



RESOLUTE
Front 2½ Back 2
Sizes 13 to 17½
Quarter Sizes 13½ to 17½



CRITERION
Front 2 Back 1½
Sizes 12½ to 18
Quarter Sizes 13½ to 17½



LANSDALE
Front 2½ Back 2½
Sizes 13 to 17½
Quarter Sizes 13½ to 17½

Ide Silver Collars



GLANSON
Front 2½ Back 2½
Sizes 13 to 17½
Quarter Sizes 13½ to 17½



SANFORD
Front 2½ Back 2½
Sizes 13 to 17½
Quarter Sizes 13½ to 17½



TACONIC
Front 2½ Back 1½
Sizes 13 to 17½
Quarter Sizes 13½ to 17½



BOYSTON
Front 2½ Back 2
Sizes 13 to 17½
Quarter Sizes 13½ to 17½



AMBOY
Front 2½ Back 1½
Sizes 13 to 18
Quarter Sizes 13½ to 17½



SUSSEX
Front 2 Back 1½
Sizes 13 to 18
Quarter Sizes 13½ to 17½



GLENMORA
Front 1½ Back 1½
Sizes 13½ to 16½
Quarter Sizes 13½ to 17½



BELMONT
Front 2½ Back 1½
Sizes 13½ to 19
Quarter Sizes 13½ to 17½



ANANDALE
Front 2½ Back 1½
Sizes 13 to 18½
Quarter Sizes 13½ to 17½



RELIANCE
Front 1½ Back 1½
Sizes 14 to 20
Quarter Sizes 13½ to 18½



GORDON
Front 2½ Back 1½
Sizes 13½ to 20
Quarter Sizes 13½ to 18½



CRAFTSMAN
Front 2½ Back 1½
Sizes 13½ to 19
Quarter Sizes 13½ to 17½

Ide Silver Collars



CANTERBURY
Front 2½ Back 2
Sizes 15 to 17½
Quarter Sizes 15¾ to 17¼



FAIRMONT
Front 2½ Back 1½
Sizes 15 to 17½
Quarter Sizes 15¾ to 17¼



TILTON
Front 2½ Back 1¾
Sizes 15¾ to 18½
Quarter Sizes 15¾ to 17¼



PORTOLA
Front 2¾ Back 1¾
Sizes 15 to 17
Quarter Sizes 15¾ to 16¾



ELVERTON
Front 2¾ Back 1¾
Sizes 15 to 17½
Quarter Sizes 15¾ to 17¼



OUTPOST
Front 2¾ Back 1¾
Sizes 15¾ to 19
Quarter Sizes 15¾ to 18½



MALDEN
Front 2¾ Back 1½
Sizes 15½ to 17
Quarter Sizes 15¾ to 16¾



ALMERA
Front 2¾ Back 1¾
Sizes 15 to 18
Quarter Sizes 15¾ to 17¼



LINDALE
Front 2¾ Back 1½
Sizes 15¾ to 18½
Quarter Sizes 15¾ to 17¼



CASSON
Front 2¾ Back 1¾
Sizes 15¾ to 18½
Quarter Sizes 15¾ to 17¼



BERKSHIRE
Front 2¾ Back 1½
Sizes 15 to 18
Quarter Sizes 15¾ to 17¼



STRATTON
Front 2¾ Back 1¾
Sizes 15 to 20
Quarter Sizes 15¾ to 18½

Ide Silver Collars



HARMON
Front 2¼ Back 1¼
Sizes 15 to 17½
Quarter Sizes 15¾ to 17¼



NESTOR
Front 2 Back 1¾
Sizes 15½ to 20
Quarter Sizes 15¾ to 17¼



RAMSDEN
Front 1¾ Back 1½
Sizes 15½ to 20
Quarter Sizes 15¾ to 18½



EBECT
Front 2¼ Back 1¾
Sizes 15 to 18
Quarter Sizes 15¾ to 17¼



TROPIC
Front 1¾ Back 1½
Sizes 15½ to 20½
Quarter Sizes 15¾ to 17¼



EQUATOR
Front 1½ Back 1½
Sizes 16 to 20
Quarter Sizes 15¾ to 18½



PAULHAN
Front 2 Back 1¾
Sizes 15 to 18½
Quarter Sizes 15¾ to 17¼



HUNTER
Front 2¼ Back 1½
Sizes 15½ to 18½
Quarter Sizes 15¾ to 17¼



OTIS
Front 2¾ Back 2
Sizes 14 to 17½
Quarter Sizes 15¾ to 17¼



WAUKOMIS
Front 2¾ Back 1½
Sizes 14 to 20½
Quarter Sizes 15¾ to 17¼



PILGRIM
Front 2 Back 1¾
Sizes 15½ to 19
Quarter Sizes 15¾ to 17¼



MARCONI
Front 1¾ Back 1½
Sizes 15½ to 20
Quarter Sizes 15¾ to 18½

Ide Silver Collars



COMET
Front 2½ Back 2½
Sizes 13 to 17½
Quarter Sizes 13½ to 17½



RAYMORE
Front 2½ Back 2½
Sizes 13½ to 17
Quarter Sizes 13½ to 16½



PEMBROKE
Front 2½ Back 2
Sizes 12 to 17½
Quarter Sizes 13½ to 17½
"Snap-On" Buttonhole



HALLEY
Front 2½ Back 1½
Sizes 15 to 18
Quarter Sizes 15½ to 17½



DELMAR
Front 2½ Back 1½
Sizes 13 to 18
Quarter Sizes 13½ to 17½



CHATHAM
Front 2 Back 1½
Sizes 12 to 18
Quarter Sizes 13½ to 17½
"Snap-On" Buttonhole



HUDSON
Front 2 Back 1½
Sizes 13 to 19
Quarter Sizes 13½ to 17½



REXTON
Front 2 Back 1½
Sizes 13 to 18
Quarter Sizes 13½ to 17½



TOPHIT
Front 1½ Back 1½
Sizes 13 to 19
Quarter Sizes 13½ to 18½



MALCOLM
Front 1½ Back 1½
Sizes 13½ to 18½
Quarter Sizes 13½ to 17½



SKY-MAN
Front 1½ Back 1½
Sizes 18 to 18½
Quarter Sizes 13½ to 17½



TORRID
Front 1½ Back 1½
Sizes 13 to 20
Quarter Sizes 13½ to 17½

Ide Silver Collars



STROLLER
Front 2½ Back 1½
Sizes 13 to 20
Quarter Sizes 13½ to 18½



CARLOW
Front 2½ Back 1½
Sizes 14 to 20
Quarter Sizes 14½ to 17½



FLORENCE
Front 2½ Back 1
Sizes 15 to 20



WEXFORD
Front 2 Back 1½
Sizes 14 to 20
Quarter Sizes 13½ to 18½



FORUM
Front 2 Back 1½
Sizes 14 to 20½
Quarter Sizes 14½ to 18½



NORDECK
Front 2½ Back 1½
Sizes 14 to 20½
Quarter Sizes 15½ to 17½



MANBURY
Front 2½ Back 1½
Sizes 13 to 19
Quarter Sizes 13½ to 17½



SEDGWICK
Front 2½ Back 1½
Sizes 14 to 20
Quarter Sizes 14½ to 18½



PORTO BELLO
Front 2 Back 1½
Sizes 14 to 20
Quarter Sizes 13½ to 18½



RAMBLER
Front 2½ Back 1½
Sizes 13½ to 20
Quarter Sizes 13½ to 17½



COMFORT
Front 2½ Back 1½
Sizes 14 to 19
Quarter Sizes 14½ to 17½
Light Weight

Ide Silver Collars



BUCKINGHAM
Front 2½ Back 2
Sizes 13½ to 17
Quarter Sizes 13½ to 16½



ANOKA
Front 2½ Back 1½
Sizes 13½ to 17½
Quarter Sizes 13½ to 17½



LACONIA
Front 2½ Back 2
Sizes 13½ to 17½
Quarter Sizes 13½ to 17½



MONTÉ CARLO
Front 2½ Back 2
Sizes 13½ to 17½
Quarter Sizes 13½ to 17½



SARGENT
Front 2 Back 1½
Sizes 13½ to 17½
Quarter Sizes 13½ to 17½



SHEERWEN
Front 2 Back 1½
Sizes 13½ to 17½
Quarter Sizes 13½ to 17½



BRUSHTON
Front 2½ Back 1½
Sizes 14 to 18
Quarter Sizes 15½ to 17½



TALMA
Front 2½ Back 2½
Sizes 14 to 17½
Quarter Sizes 13½ to 17½



MISCHIEF
Front 2½ Back 2
Sizes 13½ to 18
Quarter Sizes 14½ to 17½



ROMANIC
Front 2½ Back 2
Sizes 13½ to 18
Quarter Sizes 13½ to 17½



EXPORT
Front 2 Back 1½
Sizes 13½ to 19
Quarter Sizes 13½ to 17½



TRIUMPH
Front 2½ Back 1½
Sizes 14 to 18
Quarter Sizes 13½ to 17½

Ide Silver Collars



TANORA
Front 2 Back 1½
Sizes 13 to 18½
Quarter Sizes 15¼ to 17½



FUTURITY
Front 2 Back 1½
Sizes 14 to 17½
Quarter Sizes 14½ to 16½



COLON
Front 1½ Back 1½
Sizes 14 to 18½
Quarter Sizes 14½ to 17½



GRIMSBY
Front 1½ Back 1½
Sizes 13½ to 20
Quarter Sizes 15¼ to 17½



DURAND
Front 3½ Back 1½
Sizes 14 to 19



REPUBLIC
Front 2 Back 1½
Sizes 14 to 19



CAPITOL
Front 2½ Back 1½
Sizes 14 to 20



SENATOR
Front 2 Back 1½
Sizes 14 to 20



ROWAN
Front 3½ Back 1½
Sizes 14 to 20



MOTANA
Front 1½ Back 1½
Sizes 14 to 20

Ide Silver Collars



ASSEMBLY
Front 2½ Back 2½
Sizes 14 to 17½
Quarter Sizes 13¾ to 17¼



RANQUET
Front 2½ Back 3½
Sizes 12½ to 16½
Quarter Sizes 12¼ to 17¼



BRAUMONT
Front 2½ Back 3½
Sizes 15½ to 17
Quarter Sizes 15¼ to 17¼



TUNEDO
Front 2½ Back 2
Sizes 14 to 18
Quarter Sizes 13¾ to 17¼



ALBRY
Front 2 Back 1½
Sizes 14 to 18
Quarter Sizes 13¾ to 17¼



WAKOPA
Front 2½ Back 2
Sizes 14 to 16½
Quarter Sizes 14¼ to 16¼



SALVO
Front 2 Back 1½
Sizes 13 to 18
Quarter Sizes 14¼ to 17¼



BRANDON
Front 1½ Back 1½
Sizes 14 to 19½
Quarter Sizes 13¾ to 17¼



RUFORD
Front 1½ Back 1½
Sizes 14 to 19

Ide Silver Collars

WHITE STARCHED MADRAS



GLENDALE
White Striped Madras
Front 2½ Back 2
Sizes 18 to 17½
Quarter Sizes 18¼ to 17¼



BERKELEY
White Striped Madras
Front 3½ Back 1½
Sizes 15 to 17½
Quarter Sizes 15¼ to 17¼



CANTON
White Checked Madras
Front 2½ Back 1½
Sizes 13½ to 17½
Quarter Sizes 13¼ to 17¼



EXPOSITION
White Diagonal Checked Madras
Front 2½ Back 2
Sizes 13 to 17½
Quarter Sizes 12¾ to 17¼



BELCOURT
White Polka Dot Madras
Front 2½ Back 2½
Sizes 12 to 17½
Quarter Sizes 12¾ to 17¼



MOIRE
White Watermarked or Clouded Madras
Front 2½ Back 2
Sizes 13 to 17½
Quarter Sizes 13¼ to 17¼



DRAYTON
White Figured Madras
Front 2½ Back 1½
Sizes 12½ to 17½
Quarter Sizes 12¾ to 17¼



CASARET
White Striped Madras
Front 2½ Back 2½
Sizes 13 to 17½
Quarter Sizes 13¼ to 17¼ Assorted Stripes



CLAYMONT
White Striped Madras
Front 2½ Back 1½
Sizes 13 to 17½
Quarter Sizes 13¼ to 17¼ Assorted Stripes



ARCADIAN
White Striped Madras
Front 2½ Back 1½
Sizes 12 to 17½
Quarter Sizes 12¾ to 17¼ Narrow Stripes Only

Ide Silver Collars

SOFT COLLARS



TRAVELER
White Merized Pique
Front 2" Back 1 1/2"
Size 12 to 17



SUBURBAN
Merized
Polka Dot Madras
Front 2 1/2" Back 2"
Size 12 to 17



CRICKET
Cross Bar Pique
Front 2" Back 1 1/2"
Size 12 to 17



OUTDOOR LIFE No. 38
White Pique
Front 2 1/2" Back 2 1/2"
Size 12 1/2 to 17 1/2



POLO
Corded Vertical Pique
Front 2 1/2" Back 1 1/2"
Size 12 to 17



KNOCKABOUT
White Striped Madras
Front 3" Back 1 1/2"
Size 12 1/2 to 17 1/2



OUTDOOR LIFE No. 1
White Merized Pique
Front 2 1/2" Back 1 1/2"
Size 12 to 17



OUTDOOR LIFE No. 14
White Merized Pique
Front 2 1/2" Back 1 1/2"
Size 12 to 17



OUTDOOR LIFE No. 31
White Mull Silk
Front 2 1/2" Back 1 1/2"
Size 12 to 17

PURE WHITE SILK SOFT COLLARS



GOLF CLUB No. 12
Front 2 1/2" Back 1 1/2"
Size 12 1/2 to 17

Tape and buttons are supplied with Outdoor Life numbers 1 and 34. These as well as Traveler, Outdoor Life No. 38, Outdoor Life No. 31, Polo, Cricket, Suburban and Knockabout are put up two in a transparent envelope and packed one dozen of a style and size to the box. Price \$1.14 the dozen. Golf Club No. 12 and Tourist are put up in individual transparent envelopes and packed one half dozen of a style and size to the box. Price \$1.75 the dozen.



TOURIST
Front 2" Back 2 1/2"
Size 12 to 17

Ide Silver Collars

CLERICAL COLLARS



STYLE 2
Front 2" Back 1 1/2"
Size 14 to 17 1/2
Standing



STYLE 7
Front 1 1/2" Back 1 1/2"
Size 14 to 17 1/2
Turn-Over



STYLE 8
Front 2" Back 1 1/2"
Size 14 to 17 1/2
Turn-Over

NURSES COLLARS



CLARA BARTON 2
Front 2" Back 1 1/2"
Size 12 to 15



CLARA BARTON 1
Front 1 1/2" Back 1 1/2"
Size 12 to 15 1/2

YOUTHS COLLARS



ETON 5
Front 2 1/2" Back 2 1/2"
Size 11 to 14



ETON 4
Front 2 1/2" Back 2 1/2"
Size 11 to 14



ETON 3
Front 2" Back 2 1/2"
Size 10 to 14



TODD
Front 2 1/2" Back 2 1/2"
Size 10 1/2 to 14



KINGSLEY
Front 2 1/2" Back 2 1/2"
Size 10 to 14

Ide Silver Collars

YOUTHS STYLES



LESLIP
Front 2 1/4" Back 1 1/8"
Sizes 11 1/2 to 14



KEMPER
Front 2 1/4" Back 1 1/4"
Sizes 12 to 14



RUGBY
Front 2 1/4" Back 1 1/4"
Sizes 12 to 14



SHELDON
Front 1 3/4" Back 1 3/4"
Sizes 11 to 14



REPTON
Front 1 3/4" Back 1 3/4"
Sizes 11 to 14



CROTON
Front 2" Back 1 1/4"
Sizes 11 to 14



MITCHELL
Front 1 1/2" Back 2 1/4"
Sizes 11 to 14



PASTIME
Front 2" Back 1 1/4"
Sizes 11 to 14



PERRY
Front 1 1/2" Back 1 1/2"
Sizes 11 to 14



EQUATOR
Front 1 1/2" Back 1 1/4"
Sizes 11 to 14



MANLY
Front 1 1/2" Back 1 1/4"
Sizes 11 to 14



CHESTER
Front 1 1/2" Back 1 1/4"
Sizes 11 1/2 to 14

Ide Silver Collars

YOUTHS STYLES



ARDEN
Front 2 1/4" Back 1 1/4"
Sizes 11 to 14



MILFORD
Front 2 1/4" Back 1 1/4"
Sizes 11 to 14



TORRID
Front 1 1/2" Back 1 1/4"
Sizes 11 to 14



HAYWARD
Front 2 1/4" Back 1 1/4"
Sizes 11 to 14



ST. GEORGE
Front 2 1/4" Back 1 1/4"
Sizes 12 to 14



FROLIC
Front 1 1/2" Back 1 1/4"
Size 11 to 14



CADET
Front 2" Back 1 1/4"
Sizes 12 to 14



ARTFUL
Front 1 1/2" Back 1 1/4"
Sizes 12 to 14

Ide Silver Cuffs



HICKSON
Width 4 1/2
Sizes 10 to 12



OGDEN
Width 4 1/2
Sizes 9 to 12



SHASTA
Width 4
Sizes 10 to 12



ST. REGIS
Width 4 1/2
Sizes 9 1/2 to 12



WOOLWICH
Width 4
Sizes 10 to 12



MORRIS
Width 3 1/2
Sizes 9 1/2 to 12 1/2



CUBA
Width 3 1/2
Sizes 9 1/2 to 12



ODON
Width 2 1/2
Sizes 10 1/2 to 12



TOURAINÉ
Width 4
Sizes 10 to 11 1/2



GARLAND
Width 4
Sizes 9 1/2 to 12



ALBANY
Width 2 1/2
Sizes 9 1/2 to 12



ALGONIA
Width 2 1/2
Sizes 10 to 12

MEN'S SHIRT FRONTS



STYLE A 110
Bosom 17 1/2 to 19 1/2
3 Studs



STYLE A 112
Bosom 17 1/2 to 19 1/2
2 Eyes



STYLE A 111
Bosom 15 1/2 to 17 1/2
3 Studs

Idc

WHITE DRESS SHIRTS

Idc



IDE 162
Full Dress Pique Button
2 Studs - Coat Style
Square Cuffs Attached



IDE 169
Full Dress Pique Button
Assorted Patterns
2 Studs - Coat Style
Square Cuffs Attached



IDE 72
Full Dress Button
2 Studs - Coat Style
Square Cuffs Attached

Idc

WHITE MUSHROOM TUCK SHIRTS

Idc



R G H 106
Mushroom Tucks
Coat Style
Attached Soft French Cuffs
of Pique



N G H 109
Mushroom Tucks
Coat Style
Attached Soft French Cuffs



N G G 100
Mushroom Tucks
Coat Style
Attached 2-layered
French Cuffs

Idc

WHITE PLEATED SHIRTS

Idc



IDE 6489
96 Fine Tucks
4 Buttons - Coat Style
Round Cuffs Attached



IDE 6487
Alternating Narrow and
Wide Tucks. 3 Patterns
6 Buttons - Coat Style
Round Cuffs Attached



IDE 6504
100 Fine Tucks
3 Straps - Coat Style
Square Link Cuffs Attached

Idc

WHITE PLEATED SHIRTS

Idc



IDE 6506
19 Pleats
4 Buttons - Coat Style
Round Cuffs Attached



IDE 6507
54 Pleats
4 Buttons - Coat Style
Round Cuffs Attached



IDE 6508
58 Pleats
4 Buttons - Coat Style
Round Cuffs Attached

Silven WHITE DRESS SHIRTS *Silven*



SILVER 42
Short Bosom
1 Eyelet - Closed Front
Wingshards



SILVER 43
Short Bosom - 1 Eyelet
Closed Front - Wingshards
Extra Large Body



SILVER 73
Full Dress Bosom
2 Studs - Coat Style
Round Cuffs Attached

Silven WHITE PLEATED SHIRTS *Silven*



SILVER 339
40 Fine Tucks
4 Buttons - Coat Style
Round Cuffs Attached



SILVER 390
15 Pleats
4 Buttons - Coat Style
Round Cuffs Attached



SILVER 361
Closer Tucks
30 Small - 6 Large
4 Buttons - Coat Style
Round Cuffs Attached

Ide

WHITE SOFT FRONT SHIRTS

Silver

SILVER B F 661
Ceylon Cambric
Soft Front
4 Buttons—Coat Style
Round Collar Attached



SILVER B F X 110
Silver Oxford
4 Buttons—Coat Style
Round Collar Attached



IDE H P 1219
Hemway Long Cloth
Soft Front
4 Buttons—Coat Style
Round Collar Attached

The Ide Biplex Shirt

(PATENTED)



Two Garments in One. You see here the new Ide Biplex Shirt.

It is really two garments in one—Soft Negligé Shirt and Drawers.

The shirt is made in coat style, but the tails are turned into drawers; so the shirt cannot work out of the trousers, and of course there are no drawers to pull down.

Closed Crotch and Closed Back. The crotch is entirely closed, and the back is closed as well. The garment buttons all the way down the front and then down both legs.

Being two garments in one, it is economical; and having no buttons on the back and no flap to button over, it is convenient and comfortable.

Slips On and Off Like a Coat Shirt. All the good features that similar combination garments possess this one has.

And it has, besides, several very important superiorities found in no other make.

You can, for instance, slip this garment on or off without removing trousers or shoes!

All similar garments of other makes have to be put on like underwear—over the feet.

Permits Easy Opening at the Back. The Ide Biplex provides the most practical and common sense manner of opening at the seat.

Other similar garments button down one leg, leaving the other leg closed.

The Ide Biplex buttons all the way down the front as well as down both legs!

If a man has worn other garments that button down one leg and found that method satisfactory, he can, of course, simply unbutton one leg on the Ide Biplex.

But if he desires greater freedom—more leeway—then he will unbutton both legs.

Can't Gup, Sag, Bind nor Chafe. The Ide Biplex is shapely and always retains its shape.

It can't gup nor sag in the seat because there is no flap.

It can't bind in the crotch because there are no seat buttons to prevent free movement.

Sits Snug and Smooth. Because it is designed right and made right, it always fits.

It adjusts itself instantly to every position, and always sits snug and smooth.

At no time is there any pulling, chafing or bunching of fabric.

In short, the whole garment is made along stylish, easy fitting and hygienic lines. And it is the acme of convenience, utility and comfort—the most sensible and practical garment of its kind on the market.

Materials and Workmanship. The materials are such of the regular Ide Shirt cloths as are best adapted to this particular class of garment.

The garments are sewed in such a manner as to insure non-ripping seams; the buttons are strongly sewed on; and the buttonholes are worked in extra well and will not break nor tear out.

In a Class by Itself. The Ide Biplex represents as much of an advance over other similar garments as the latter represented over ordinary shirts and separate underwear.

And the whole construction is so simple, so practical, so athletic and so convenient that the wonder is it was never thought of before.

All sizes—many different cloths and patterns. Swatch Cards upon request.

\$12.50, \$15.00, \$16.50 and \$21.00 the dozen.

Athletic Styles.

The Ide Biplex is also made in athletic style, in two different grades as follows:

N. U. K. 100—White Mercerized Pique; half sleeves; attached collar, buttoned down English style, \$15.00 the dozen.

R. V. K. 100—White Mercerized Oxford; half sleeves; attached collar, buttoned down English style. \$16.50 the dozen.

White Shirt Price List

PIQUE FULL DRESS SHIRTS (Bosom 16 x 9 1/2)		Shirt No.	Price
Coat Style, Square Link Pique Cuffs Attached..... 2 studs	IDE	104	\$16.00
Coat Style, Square Link Pique Cuffs Attached..... 2 studs	IDE	102	15.50
PLAIN FULL DRESS SHIRTS			
Coat Style, Square Link Cuffs Attached, Bosom 16 1/2..... 2 studs	IDE	90	15.00
Coat Style, Square Link Cuffs Attached, Bosom 16 1/2..... 2 studs	IDE	72	12.50
Coat Style, Round Link Cuffs Attached, Bosom 15 1/2 x 9 1/4..... 2 studs	SILVER	75	9.00
PLEATED FULL DRESS SHIRTS (Bosom 16 x 9 1/2)			
Coat Style, 102 Fine Tucks, Square Link Cuffs Attached..... 3 studs	IDE	6204	15.00
REGULAR BOSOM SHIRTS			
Closed Front, Bosom 12 1/2 x 7 1/2, Wristbands..... 1 eyelet	SILVER	42	9.00
Closed Front, Bosom 12 1/2 x 7 1/2, Wristbands Extra Large Body..... 1 eyelet	SILVER	43	9.00
Closed Front, Bosom 13 1/2 x 8 1/2, Wristbands..... 2 eyelets	SILVER	61	9.00
COMFORT BOSOM SHIRTS			
Coat Style, Bosom 10 1/2 x 7, Cuffs Attached.....	HRS	100	12.50
Coat Style, Bosom 10 1/2 x 7, Cuffs Attached.....	HRS	100	9.00
PLEATED NEGLIGÉ SHIRTS (Bosom 18 x 9 1/2)			
Coat Style, 96 Fine Tucks, Round Link Cuffs Attached..... 4 buttons	IDE	6400	13.50
Coat Style, Cluster Tucks, Round Link Cuffs Attached..... 4 buttons	IDE	6407	15.50

White Shirt Price List—Continued

		Shirt No.	Price
Coat Style, 19 Pleats, Round Link Cuffs Attached..... 4 buttons	IDE	6308	\$12.50
Coat Style, 34 Pleats, Round Link Cuffs Attached..... 4 buttons	IDE	6307	12.50
Coat Style, 25 Pleats, Round Link Cuffs Attached..... 4 buttons	IDE	6305	12.50
Coat Style, Cluster Tucks, Round Link Cuffs Attached..... 4 buttons	IDE	6309	12.50
Coat Style, 20 Pleats, Round Link Cuffs Attached..... 4 buttons	SILVER	3389	9.00
Coat Style, 16 Pleats, Round Link Cuffs Attached..... 4 buttons	SILVER	3360	9.00
Coat Style, Cluster Tucks, Round Link Cuffs Attached..... 4 buttons	SILVER	3351	9.00
PLEATED NEGLIGÉ SHIRTS (Continuous Pleats)			
Coat Style, 10 Spaced Pleats, Round Link Cuffs Attached..... 5 buttons	IDE	6311	12.50
Coat Style, 14 Pleats, Round Link Cuffs Attached..... 5 buttons	IDE	6312	12.50
PLEATED NEGLIGÉ YOUTH'S SHIRTS			
Coat Style, 10 Pleats, Round Link Cuffs Attached, 3 buttons	SILVER Y	3123	8.50
SOFT FRONT SHIRTS WITH ATTACHED CUFFS			
Coat Style, "BOMBAY" Long Cloth..... 5 buttons	IDE HF	1219	12.50
Coat Style, "BOMBAY" Long Cloth, 1 Pocket, 5 buttons	IDE HFF	1219	12.50
Coat Style, "IDE" Oxford..... 5 buttons	IDE HFX	100	12.50
Coat Style, "CEYLON" Cambric..... 4 buttons	SILVER BF	664	9.00
Coat Style, "CEYLON" Cambric, 1 Pocket..... 4 buttons	SILVER BFF	145	9.00
Coat Style, "SILVER" Oxford, 1 Pocket..... 4 buttons	SILVER BFX	110	9.00

Specials

		Shirt No.	Price
Coat Style, Mushroom Tucks, French Cuffs of Pique Attached.....	RGH	106	16.50
Coat Style, Mushroom Tucks, French Cuffs Attached.....	NGH	109	15.00
Coat Style, Mushroom Tucks, Laundered French Cuffs Attached.....	NGG	100	15.00

Assortment of Sleeve Lengths

REGULAR SLEEVE LENGTH

Fancy Negligé Styles—Detached Cuffs

13½	14	14½	15	15½	16	16½	17	17½	18
30	30	30							
31	31	31	31	31	31	31			
32	32	32	32	32	32	32	32	32	32
			33	33	33	33	33	33	33

Length designated above shows measurement to end of wristband.

Fancy Negligé Styles—Attached Cuffs

13½	14	14½	15	15½	16	16½	17	17½	18
32	32	32							
33	33	33	33	33	33	33			
34	34	34	34	34	34	34	34	34	34
			35	35	35	35	35	35	35

Length designated above shows measurement to end of cuff.

Large Body Negligé Shirts—Detached Cuffs

16	16½	17	17½	18	18½	19	19½
32	32	32	32	32	32	32	32
33	33	33	33	33	33	33	33

Length designated above shows measurement to end of wristband.

Large Body Negligé Shirts—Attached Cuffs

16	16½	17	17½	18	18½	19	19½
34	34	34	34	34	34	34	34
35	35	35	35	35	35	35	35

Length designated above shows measurement to end of cuff.

SPECIAL SLEEVE LENGTH

Shirts carried in stock at Troy and branch offices. Immediate delivery.

Staple White Dress and Pleated White Shirts—Without Cuffs

13½	14	14½	15	15½	16	16½	17	17½	18
30	30	30	30	30	30	30	30	30	30
31	31	31	31	31	31	31	31	31	31
32	32	32	32	32	32	32	32	32	32
			33	33	33	33	33	33	33
			34	34	34	34	34	34	34
			35	35	35	35	35	35	35

Length designated above shows measurement to end of wristband.

Staple White Dress and Pleated White Shirts—Attached Cuffs

13½	14	14½	15	15½	16	16½	17	17½	18
32	32	32	32	32	32	32	32	32	32
33	33	33	33	33	33	33	33	33	33
34	34	34	34	34	34	34	34	34	34
			35	35	35	35	35	35	35
			36	36	36	36	36	36	36
			37	37	37	37	37	37	37

Length designated above shows measurement to end of cuff.

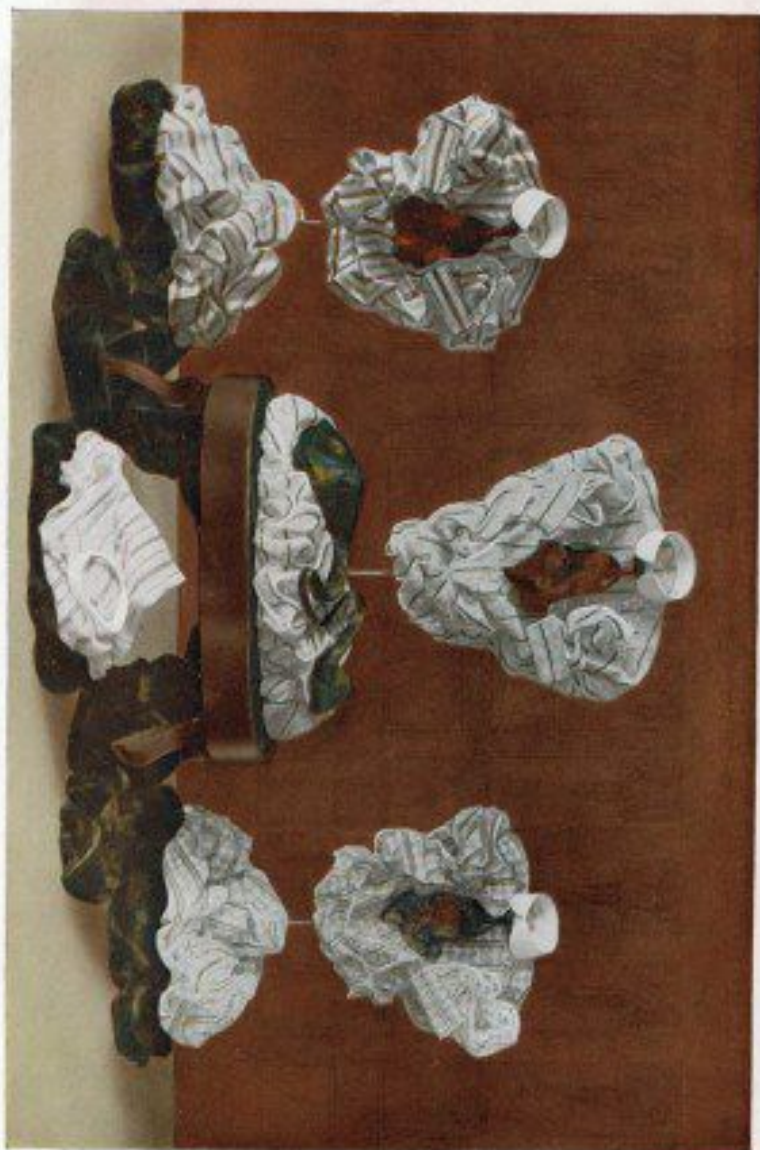
Staple Negligé Styles—Attached Cuffs

13½	14	14½	15	15½	16	16½	17	17½	18
32	32	32	32	32	32	32	32	32	32
33	33	33	33	33	33	33	33	33	33
34	34	34	34	34	34	34	34	34	34
			35	35	35	35	35	35	35
			36	36	36	36	36	36	36

Length designated above shows measurement to end of cuff.

The Staple line includes a large assortment of patterns with Starched Cuffs, Soft French Cuffs with Detached Collar, Soft Cuff with Double bottoms and attached Collar.

All shirts are put up three of one sleeve length to a box.



Starched Shirts with Soft French Cuffs



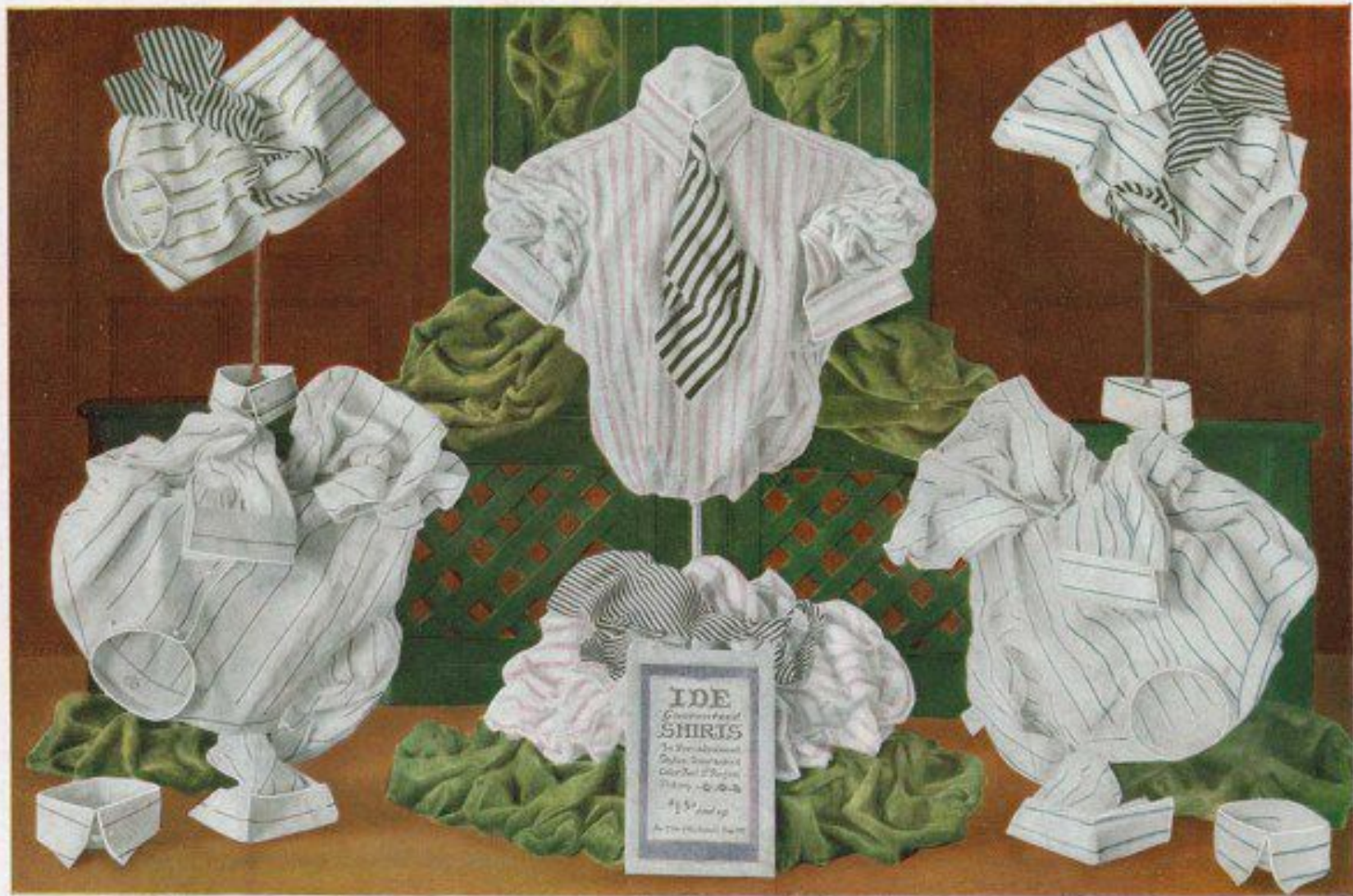
Neckband Shirts with Soft French Cuffs



Detached Soft Collar Shirts with French Soft Collar



Shirts with Attached Soft Collars and Soft Cuffs
 Shirts at left is shown with fastened down collar; shirt in center with top and bottom; shirt at right with top only



36

Detached Soft Collar Shirts with French Soft Cuffs

14
13
11 NEAR
10
9
8
RICKS
RULE CO.
MADE IN

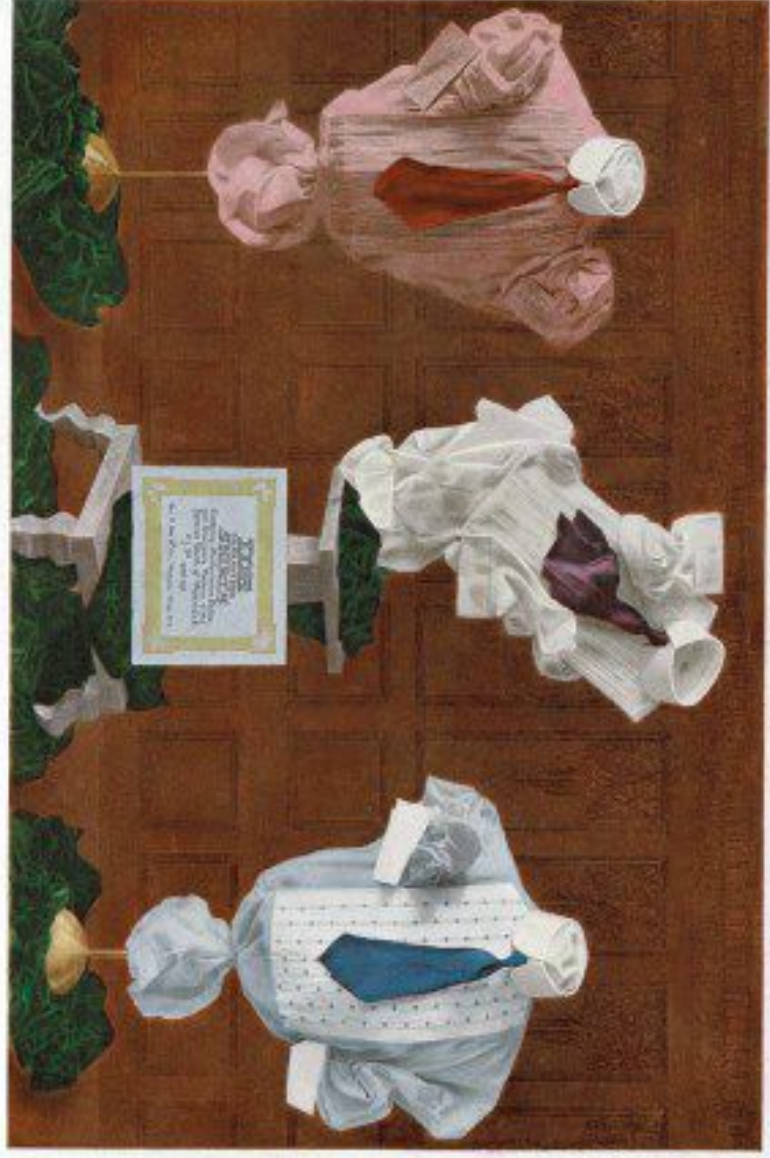


Shirts with Attached Soft Collars and Soft Cuffs

Shirt at left is shown with buttoned down collar; shirt in center with tape and buttons; shirt at right with tape only



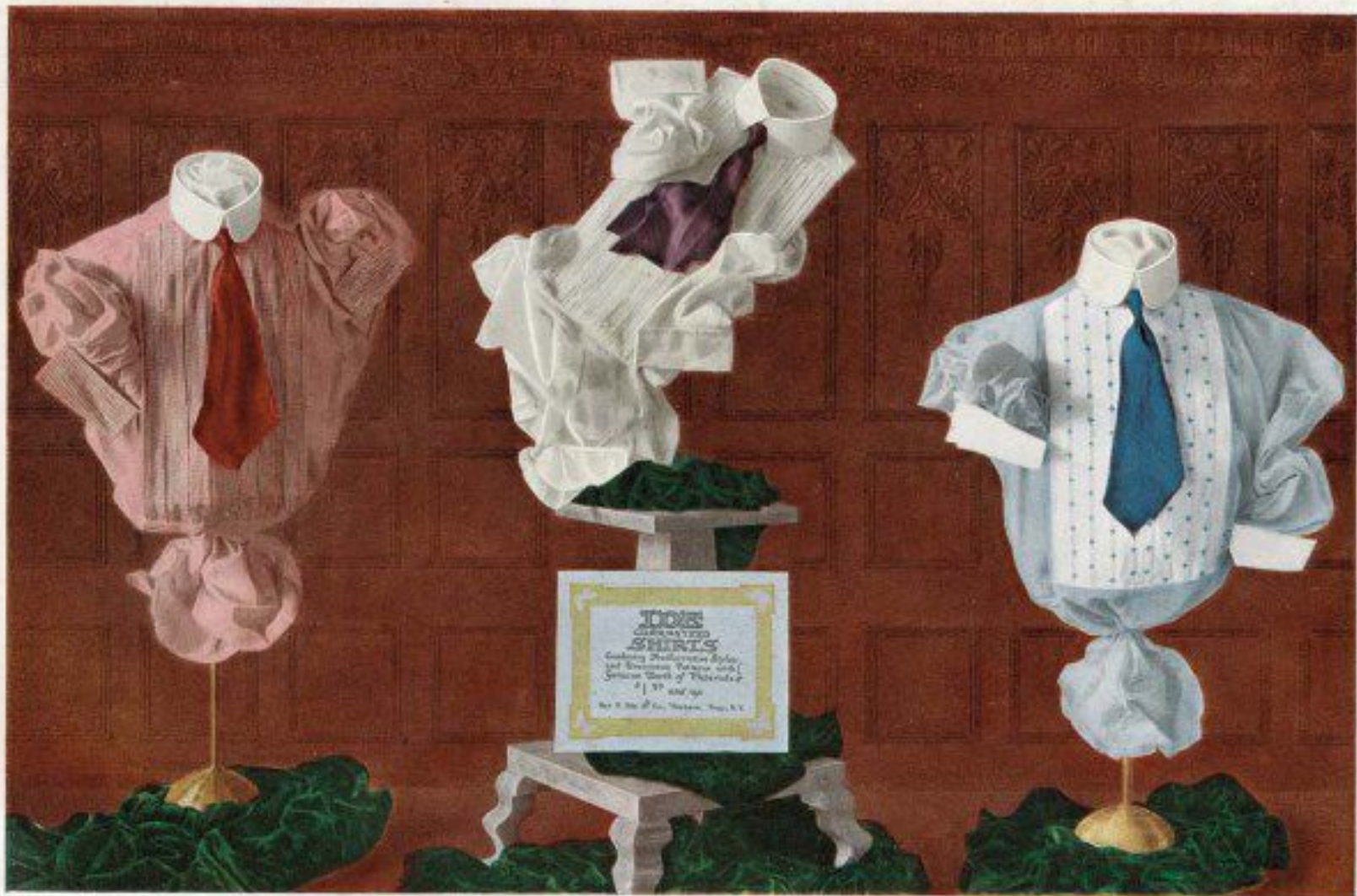
Neckward Shirts with Layered Collars



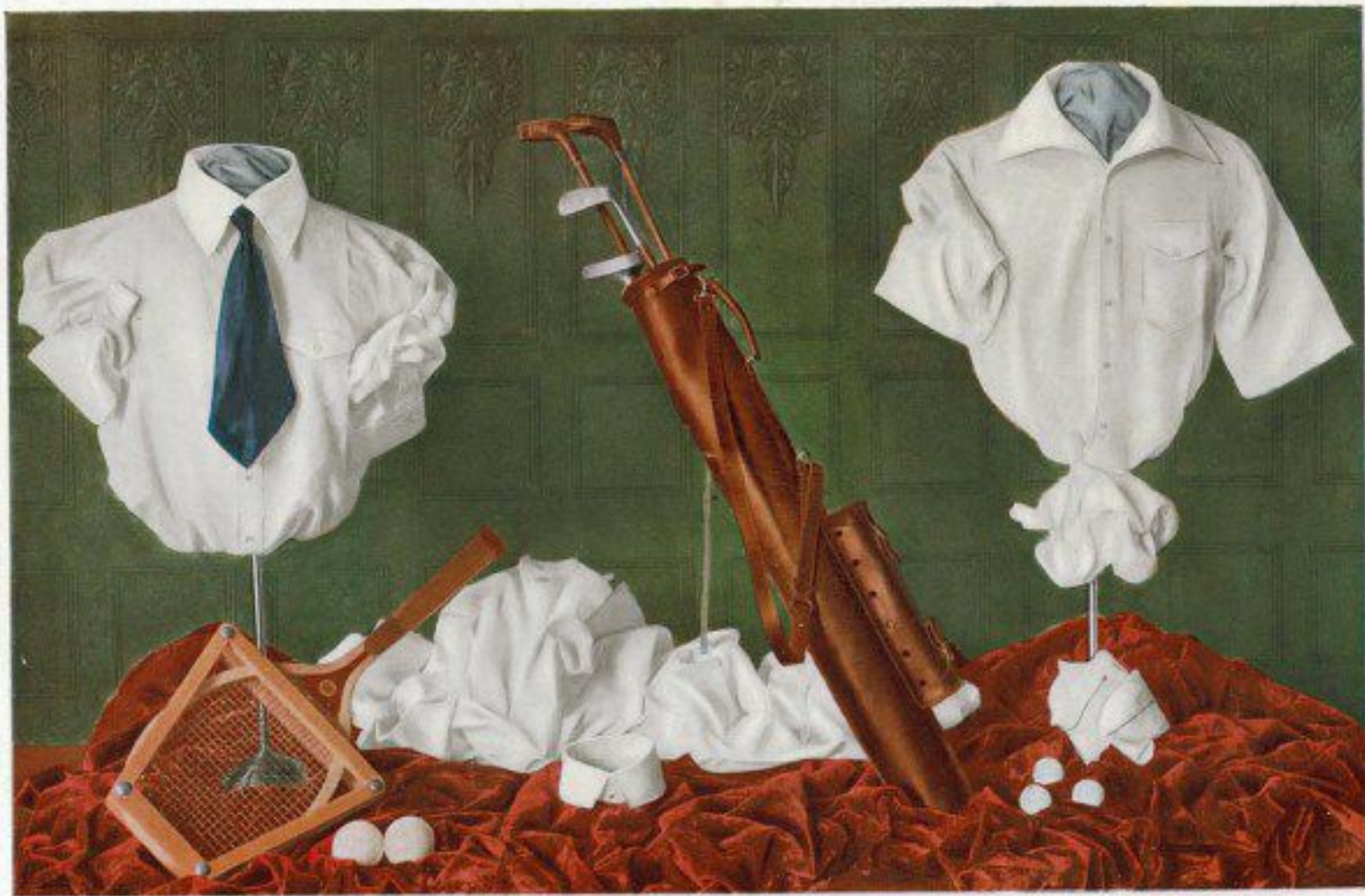
Imported Pleated Boon Noctilien



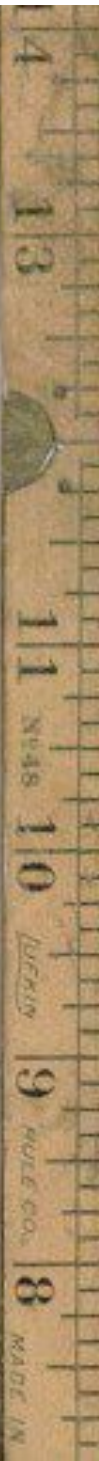
Neckband Shirts with Laundered Cuffs



Imported Pleated Bosom Novelties

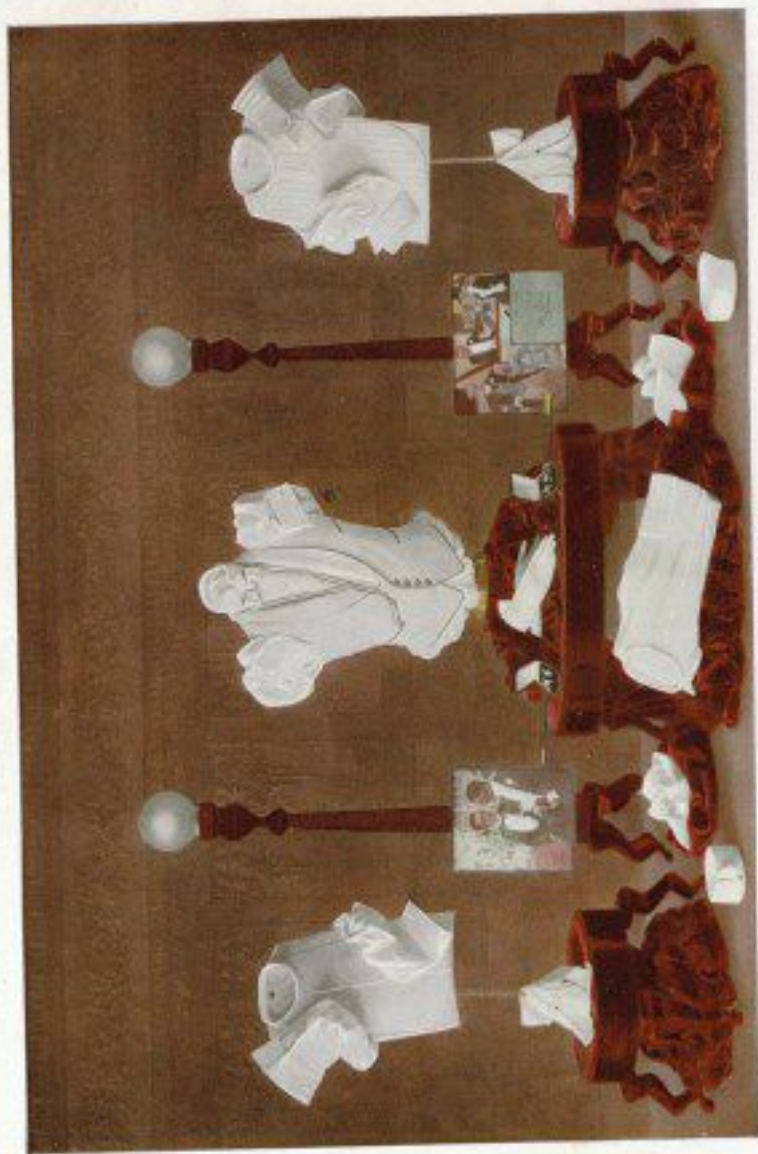


Outing Shirt with Sport Collar—Full length or half sleeves as desired





Mushroom Pleated Bosom Shirts with Laundered French Cuffs or with Soft French Cuffs as desired



Full Dress Shirts

Ide and Silver Brand Shirts

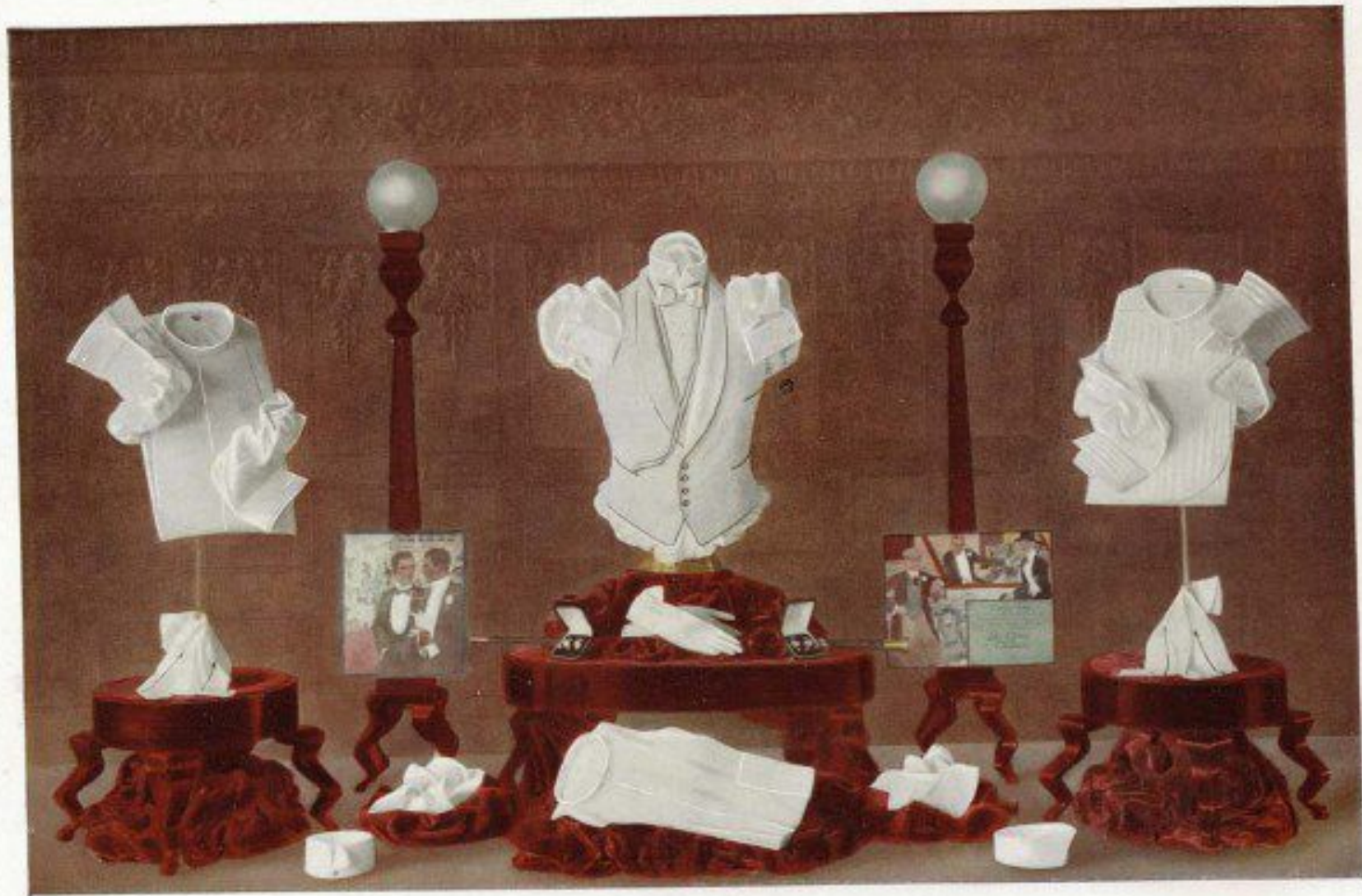
ACAREFUL inspection of the colored illustrations of shirts shown in this catalog will make clear the construction and style of garments which we believe will be most in demand the coming year.

One feature of the line which we wish to particularly mention is that we have added comprehensive assortments of styles with neckbands and soft French cuffs at full range of standard prices. We expect, however, that there will still be a large demand for shirts with detached collars and have not neglected this style.

The line contains many foreign patterns which are exclusive, being designed for us and not to be found in competitors' lines. To the dealer who wishes to show exclusive patterns, therefore, we have a very fine offering.

We have devoted much time and attention during the past year to the tailoring of our garments and feel that today there is no better fitting shirt made. We urge our customers to satisfy themselves on this point by selecting shirts from stock and trying them on normally proportioned men. It will be found that the garments are not only loose and comfortable and of liberal proportions, but that the hang of the shirt gives an effect and appearance, stylish in the extreme. This will be found equally true of the fit of collars, both detached and attached. In fact, our shirts, in this respect, have been made so nearly perfect that we doubt if any further improvement could be brought about.

It has been our policy, for several years, to carry in the branch houses, a line of staple shirts at different prices, including white dress, white pleated negligé shirts with attached banded cuffs, negligé shirts with soft French cuffs and detached soft collars; also negligé shirts with soft cuffs and attached soft collars. It is not necessary for the dealer, therefore to stock up heavily on staple styles as they can be readily secured from our branch houses in the same manner as our collars.



Full Dress Shirts

14
13
11
10
9
8
MADE IN



Ide

COLLARS

Supplement to
Catalogue

Geo. P. Ide & Co., Troy, N. Y.

BRANCH HOUSES

BOSTON
82-86 Kingston Street
KANSAS CITY, MO.
1024 Walnut Street
PORTLAND, ORE.
45 Fourth Street

NEW YORK
156 Fifth Avenue
DALLAS
1110 Commerce Street
LOS ANGELES
Cor. Fourth and Los Angeles Streets

CHICAGO
203 W. Jackson Boulevard
SAN FRANCISCO
762-768 Mission Street
HAVANA, CUBA
Roma Hotel Building

IDE SOFT

At \$1.10 the dozen

Put up two in a transparent envelope. Sizes 14 to 16 are packed one dozen of a style and size to the box. Sizes under 14 and over 16 are packed one-half dozen to the box.



Outdoor Life No. 1
White Mercerized Pongee
Tape and buttons Back 1½ in.
Front 2¼ in. Sizes 12 to 18



Outdoor Life No. 14
White Mercerized Pongee
Tape and buttons Back 1½ in.
Front 2¼ in. Sizes 12 to 18



Riverside
White Mercerized Repp
Tie Tapes Back 9 in.
Front 2¼ in. Sizes 12 to 17



Traveler
White Mercerized Poplin
Back 1½ in.
Front 2 in. Sizes 12 to 17½



Cricket
White Mercerized Repp
Back 2¼ in.
Front 2½ in. Sizes 13½ to 17



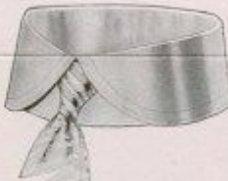
Speedway
White Mercerized Oxford
Starched End Band
Back 1½ in.
Front 3 in. Sizes 12 to 17½



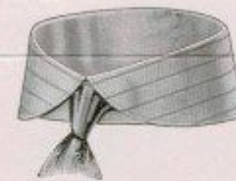
Outdoor Life No. 30
White Pique
Back 1½ in.
Front 3¼ in. Sizes 12 to 17½



Outdoor Life No. 31
White Mull Silk
Back 1½ in.
Front 3¼ in. Sizes 12 to 17½



Cross Country
White Mercerized Repp
Tie Tapes Back 2 in.
Front 2¼ in. Sizes 12 to 17½



Riverton
Mercerized Striped Oxford
Starched End Band
Tie Tapes Back 2½ in.
Front 2 in. Sizes 12 to 17½



Knockabout
White Mercerized Striped Madras
Back 1½ in.
Front 3¼ in. Sizes 12 to 17½



Hiking
White Pique
Back 1½ in.
Front 2¾ in. Sizes 12 to 18



Tabarin
White Mercerized Corded Poplin
Back 1½ in.
Front 2½ in. Sizes 12 to 18



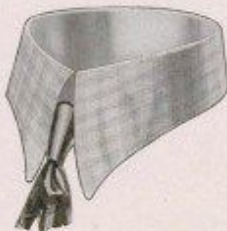
Recreation
White Striped Repp
Back 1½ in.
Front 2¾ in. Sizes 12 to 18



Rodley
White Striped Repp
Back 2 in.
Front 2¼ in. Sizes 12 to 18



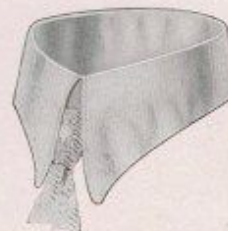
Crosswell
White Mesh Weave
Back 1½ in.
Front 2¾ in. Sizes 12 to 18



Meadow Brook
White Checked Pique
Tie Tapes Back 1½ in.
Front 3½ in. Sizes 13½ to 17



Overland
White Mercerized Repp
Tie Tapes Back 2 in.
Front 2¼ in. Sizes 13½ to 17



Polo
White Mercerized Repp
Tie Tapes Back 1½ in.
Front 3¼ in. Sizes 12 to 17½

IDE SOFT COLLA

At \$1.10 the dozen

parent envelope. Sizes 14 to 16 are packed one dozen of a style and size to the box. Sizes under 14 and over 16 are packed one-half dozen to the box.

Put up in individual tr



Outdoor Life No. 14
White Mercerized Pongee
Tape and buttons
Front 2 1/2 in. Back 1 1/2 in.
Sizes 12 to 18



Riverside
White Mercerized Repp
Tie Tapes
Front 2 1/4 in. Back 2 in.
Sizes 12 to 17



Traveler
White Mercerized Poplin
Back 1 1/2 in.
Front 2 in. Back 1 1/2 in.
Sizes 12 to 17 1/2



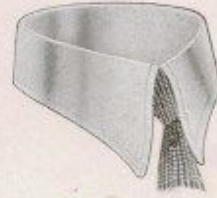
Golf Club No. 12
White Tub Silk
Front 3 1/2 in. Back 1 1/2 in.
Sizes 12 1/2 to 17 1/2



Speedway
White Mercerized Oxford
Starched End Band
Front 3 in. Back 1 1/2 in.
Sizes 12 to 17 1/2



Outdoor Life No. 30
White Pique
Front 3 1/4 in. Back 1 1/2 in.
Sizes 12 to 17 1/2



Outdoor Life No. 31
White Mall Silk
Back 1 1/2 in.
Front 2 1/4 in. Back 1 1/2 in.
Sizes 12 to 17 1/2

Put up in individual tr



Edgewater
White Bengaline Silk
Front 3 1/2 in. Back 2 1/2 in.
Sizes 12 1/2 to 17 1/2



Riverton
Mercerized Striped Oxford
Starched End Band
Tie Tapes
Front 2 in. Back 2 1/4 in.
Sizes 12 to 17 1/2



Knockabout
White Mercerized Striped Madras
Front 2 1/4 in. Back 1 1/2 in.
Sizes 12 to 17 1/2



Hiking
White Pique
Back 1 1/2 in.
Front 2 1/4 in. Back 1 1/2 in.
Sizes 12 to 18



Crusader
White Bengaline Silk
Buttons on Band
Front 2 1/2 in. Back 2 1/2 in.
Sizes 13 to 17



Recreation
White Striped Repp
Front 2 1/4 in. Back 1 1/2 in.
Sizes 12 to 18



Rodley
White Striped Repp
Front 2 1/4 in. Back 2 in.
Sizes 12 to 18



Croswell
White Mesh Weave
Front 2 1/4 in. Back 1 1/2 in.
Sizes 12 to 18



Lakeside
White Ottoman Silk
Front 3 1/2 in. Back 2 in.
Sizes 13 1/2 to 17



Overland
White Mercerized Repp
Tie Tapes
Front 2 1/2 in. Back 2 in.
Sizes 13 1/2 to 17



Pole
White Mercerized Repp
Tie Tapes
Front 3 1/4 in. Back 1 1/2 in.
Sizes 12 to 17 1/2

COLLARS

At \$1.75 the dozen

Put up in individual transparent envelopes and packed one-half dozen to the box.



Golf Club No. 12
White Tub Silk
Front 3 1/4 in. Back 2 1/4 in.
Sizes 12 1/2 to 17 1/2



Mandalay
Fine Striped Mercerized Poplin
Tie Tapes
Front 2 1/4 in. Back 2 1/4 in.
Sizes 13 to 17



Tourist
White Tub Silk
Tie Tapes
Front 2 in. Back 1 1/4 in.
Sizes 12 to 17

At \$2.00 the dozen

Put up in individual transparent envelopes and packed one-half dozen to the box.



Edgewater
White Bengaline Silk
Front 2 1/4 in. Back 2 1/4 in.
Sizes 12 1/2 to 17 1/2



Fieldston
Fancy Striped Pique
Front 2 1/4 in. Back 2 1/4 in.
Sizes 13 to 17



Mohawk
Fancy Striped Pique
Front 2 1/4 in. Back 1 1/4 in.
Sizes 12 to 18



Crusader
White Bengaline Silk
Buttons on Band
Front 2 1/4 in. Back 2 1/4 in.
Sizes 13 to 17



Whiteway
White Pique
Tie Tapes
Front 2 1/4 in. Back 2 1/4 in.
Sizes 13 to 17



Falmouth
White Ottoman Silk
Tie Tapes
Front 2 1/4 in. Back 2 in.
Sizes 13 to 17



Lakeside
White Ottoman Silk
Front 2 1/4 in. Back 2 in.
Sizes 13 1/2 to 17



Sportsman
White Pique
Tie Tapes
Front 2 1/4 in. Back 2 1/4 in.
Sizes 13 to 17



Golf Club No. 26
Satin Striped Tub Silk
Tie Tapes
Front 3 1/4 in. Back 1 1/4 in.
Sizes 12 1/2 to 17

IDE STARCHED COLLARS



HOLLISTON
Front 2½ in. Back 2½ in.
Sizes 12 to 17½
Quarter Sizes 13½ to 16½



WELTON
Front 2½ in. Back 2½ in.
Sizes 11 to 17
Quarter Sizes 13½ to 16½



CORNWALL
Front 2½ in. Back 2½ in.
Sizes 11 to 16½
Quarter Sizes 13½ to 16½



HARTLAND
Front 1¾ in. Back 2½ in.
Sizes 12½ to 18
Quarter Sizes 13½ to 17½



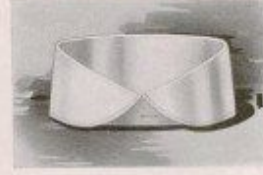
WENDELL
Front 2½ in. Back 2 in.
Sizes 13 to 17
Quarter Sizes 13½ to 16½



EDGEWELL
Front 2½ in. Back 1½ in.
Sizes 11 to 17½
Quarter Sizes 13½ to 16½



MIDDLESEX
Front 1½ in. Back 1½ in.
Sizes 13 to 17
Quarter Sizes 13½ to 16½



CORTLAND
Front 2 in. Back 2½ in.
Sizes 12½ to 18
Quarter Sizes 13½ to 17½



DREXEL
Front 2½ in. Back 2 in.
Sizes 12½ to 18
Quarter Sizes 13½ to 17½



REXMERE
Light weight with tape and buttons
Front 2½ in. Back 1½ in.
Sizes 12½ to 17
Quarter Sizes 13½ to 16½



PROSPERITY
Front 3 in. Back 2 in.
Sizes 12½ to 17½
Quarter Sizes 13½ to 17½



CAMERON
Front 2½ in. Back 2 in.
Sizes 12 to 17
Quarter Sizes 13½ to 17½



LAKEPORT
Light Weight
Front 2½ in. Back 1¾ in.
Sizes 13 to 17
Quarter Sizes 13½ to 16½



WESTMONT
Light Weight
Front 3 in. Back 1¾ in.
Sizes 13 to 17
Quarter Sizes 13½ to 16½



BURLINGHAM
Front 1¾ in. Back 1½ in.
Sizes 13½ to 19
Quarter Sizes 13½ to 17½



MERRITON
Front 2½ in. Back 2 in.
Sizes 11¼ to 17
Quarter Sizes 13½ to 17½



LARCHMONT
Front 2½ in. Back 2 in.
Sizes 13½ to 17
Quarter Sizes 13½ to 17½



TOWNLEY
Front 2½ in. Back 2 in.
Sizes 13½ to 17
Quarter Sizes 13½ to 17½